

30 Bendix Street , Manchester, M4 5GJ

Occupying a prestigious penthouse position within the highly sought-after Ancoats Gardens development, this exceptional two-bedroom apartment offers luxury city living at its finest, with NO ONWARD CHAIN., can be sold FURNISHED.

Beautifully presented throughout and finished to an outstanding specification, this truly turnkey home combines sophisticated contemporary design with first-class resident facilities in one of Manchester's most desirable locations.

Residents of Ancoats Gardens enjoy an unrivalled lifestyle with an elegant reception lobby and concierge service (9am-7pm), beautifully designed co-working spaces, two landscaped rooftop gardens, a stunning duplex gymnasium equipped with premium fitness equipment, secure video intercom entry and high-speed Wi-Fi included within the service charge. Underground parking is available to rent by monthly permit.

Offers over £300,000

30 Bendix Street , Manchester, M4 5GJ



- Prestigious penthouse apartment within the sought-after Ancoats Gardens development
- Private balcony terrace with access from the main living space
- Electric underfloor heating, video intercom entry and high-speed Wi-Fi included within the service charge
- Immaculately presented throughout – turnkey ready with luxury specification
- Two generous double bedrooms, including a superb principal suite with dressing area and en-suite
- Exclusive resident amenities including concierge/reception, stylish co-working spaces, two rooftop gardens and a duplex gymnasium
- Spacious open-plan living, dining and kitchen with floor-to-ceiling windows
- Contemporary kitchen with integrated appliances and Minerva work surfaces
- Offered fully furnished by separate negotiation, including sofas, dining furniture and beds

Kitchen/Diner/Lounge

19'3" x 9'10" (5.87 x 3.02)

Balcony/Terrace

8'4" x 5'5" (2.56 x 1.66)

Hallway

Shower Room

8'2" x 4'4" (2.50 x 1.34)

Bedroom Two

10'2" x 9'4" (3.10 x 2.86)

Bedroom One

13'9" x 9'5" (4.20 x 2.89)

Walk Through Dressing Area

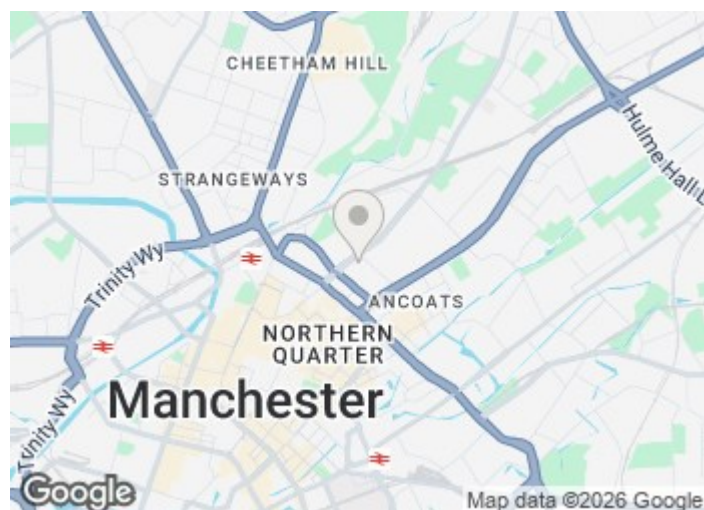
8'2" x 2'8" (2.50 x 0.82)

En-Suite

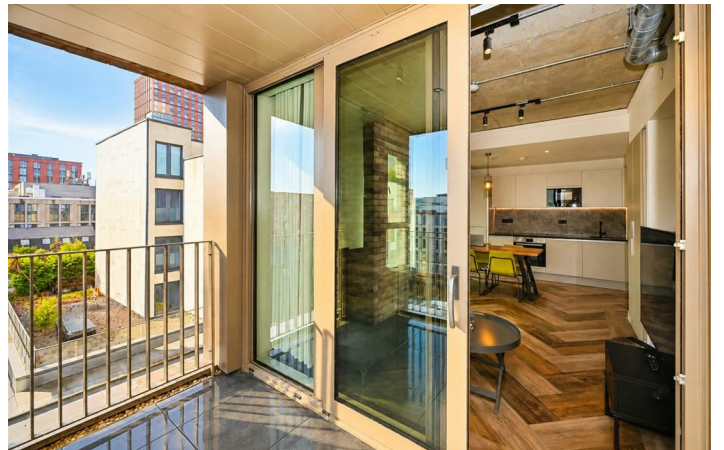
8'2" x 4'4" (2.50 x 1.34)

Duplex Gymnasium

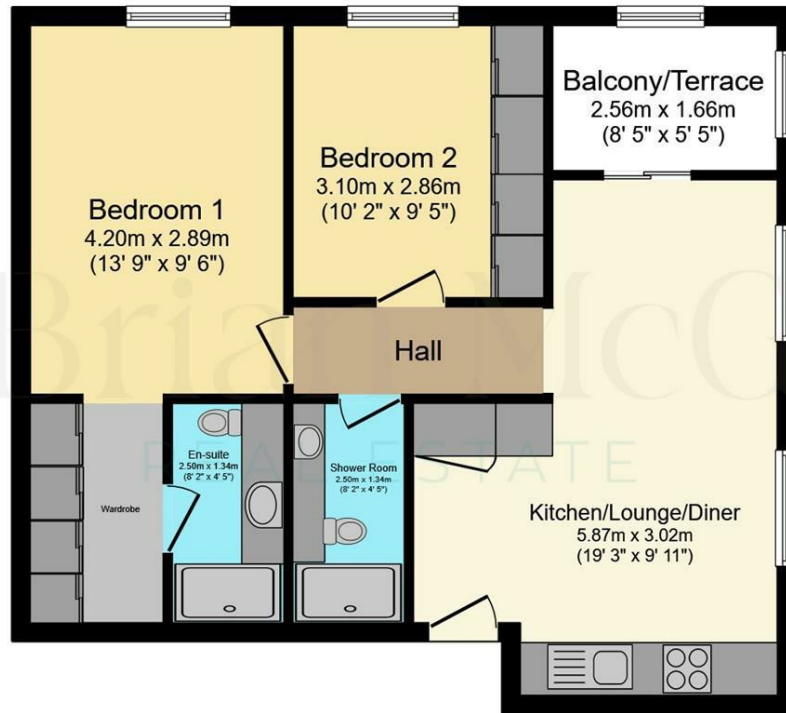
Rooftop Gardens x 2



[Directions](#)



Floor Plan



Floor Plan

This floor plan is for illustrative purposes only. It is not drawn to scale. Any measurements, floor areas (including any total floor area), openings and orientations are approximate. No details are guaranteed, they cannot be relied upon for any purpose and do not form any part of any agreement. No liability is taken for any error, omission or misstatement. A party must rely upon its own inspection(s). Powered by www.Propertybox.io

These particulars, whilst believed to be accurate are set out as a general outline only for guidance and do not constitute any part of an offer or contract. Intending purchasers should not rely on them as statements of representation of fact, but must satisfy themselves by inspection or otherwise as to their accuracy. No person in this firm's employment has the authority to make or give any representation or warranty in respect of the property.

